



eXit SPACE



THEATER KIT
SPECS & INFO

Artistic Director: Marlo Martin
Rentals Manager: Christin Olyano

eXit SPACE | NOD Theater
1621 12th AVE
SEATTLE WA 98122



ABOUT US



1621 12TH AVE SEATTLE 98122

Newly renovated in 2022, eXit SPACE now calls NOD Theater one of its three homes. Designed with dancers and theater companies in mind, NOD Theater is the ideal size for PNW companies. It has been updated and outfitted with a NOMAD LED lighting system, new electric and grid, full audio system, expanded stage area, risers and seating for audience, black drapes, cyc, lounge/concession space, and full backstage/dressing area.

Aptly named NOD Theater; we take a bow and acknowledge all of the artists who have called this space home. Those who have sweat in these rooms, created and performed, learned and explored. We are grateful to continue this legacy and are committed to providing a brave space for all to continue their dance journey.

eXit SPACE welcomes you, to your theater. We hope that NOD will be a space you return to season after season as you produce, create, and share.

Read on for details on the specs and costs.

OUR TEAM

IT ALL STARTS HERE



MARLO MARTIN

Marlo is the founder and director of eXit SPACE, Studio SEA, and NOD Theater.

She has an extensive history of producing and directing in both small and large venues. Marlo understands the needs of dance and theater companies.

NOD was specifically designed to support PNW dance and theater companies. With limited affordable and accessible venues in Seattle she understands the value and importance of this space. Marlo is excited to welcome your company to NOD Theater!

ARTISTIC DIRECTOR



CHRISTIN OLYANO

Christin has been with eXit SPACE from day one; as a student, faculty, staff, and now the Theater and Rentals Manager.

Her dance and performance background allows for a deeper acknowledgment and understanding of your needs. She will work hard to accommodate your company's requests and needs. Christin

is an impeccable organizer and coordinator. Count on her to be timely and efficient. Christin is committed to assisting you in the success of your production.

RENTALS MANAGER

THE NOD TECH TEAM

TECH DIRECTORS, STAGE MANAGERS, AND LIGHT DESIGNERS:

BECCA BLACKWELL , TESSA BANALES, & DARIA FISHER

TECH DIRECTOR, BOARD OP, HOUSE MANAGERS

ROSE AMLIN, VIVIAN LARSEN, MIKAYLA VILLA-HOWELLS

HOUSE MANAGERS:

TYRA KOPF, TRACEY SMITH, CAROL DAVIS, HAYLEY KELLER

NOD THEATER

LET THE SHOW BEGIN

STEP ONE

DREAM.

Dream big. Dream a lot. Collect other artists interested in your project and start creating! Need rehearsal space? We have that too. eXit SPACE has three locations in Seattle that house five fully equipped dance studios.

Read through our theater specs and info, review the rep plot and equipment lists. Create your budget and look at the fees for NOD Theater. Consider the size of show you want to produce and if NOD is right for you.

STEP TWO

PRE-PRODUCTION PLANNING.

Email Christin, NOD's Rental Manager to inquire about availability and booking your production .

Rentals@exitspacedance.com

Christin will ask you a series of questions so she can best create an estimate and contract for your event. Once the details are final you will simply mail in your signed contract and 20% deposit.

STEP THREE

PRODUCTION MEETING.

Build your team and develop your work. Enjoy the creative process! And, about one-three months prior to opening night our team will come together with yours for a Production Meeting. We will make sure we understand your vision and communciate how we are able to support it. Following the meeting we will look forward to seeing you at load-in and tech!

SPECS & DETAILS

EQUIPMENT LIST

LIGHTING

See repertory plot (page 8) for positions
16 ETC Source Four LED Series 2 Luster – 70 degree ellipses
12 ETC Source 4wrđ white on parnel bodies
9 ETC Source 4wrđ white on 50 degree ellipse bodies

CONTROL

ETC – NOMAD

SOUND

2 Yamaha IF2112/as main speakers
1 DAS Audio Artec 322S subwoofer
6 Artec-T monitorspeakers
2 Channel mixer
Computer play back

STAGE

Performance space SL→SR: 35'5"x41' (DS(DS edge of sides) →US DRAPE)
Blonde wood floor
Black Marley
Black 3 side surround
Up stage left and right wings
Grid height 14'; 6' spacing

THE THEATER SPACE

SEATING

110 Seats

PERFORMANCE SPACE

Stage area 35'5"x41'
Choose from black marley or blonde wood floor
Full run of black drapes
Cyc
AC/Heat

WILL CALL & LOUNGE

750 sq foot lounge & bar / ticket booth

DRESSING ROOM

1300 sq ft studio (Studio Oakland)
Full wall of mirrors
AC/Heat
Tables & Chairs upon request
Private bathroom
Quick change areas

**WE LOOK FORWARD TO
WORKING WITH YOU.**

FEES & OPTIONS

STANDARD FEES

THEATER SPACE DURING TECH AND DRESS
(INCLUDES NOD AND OAKLAND)

\$25 per hour

TECH DIRECTOR

\$40 per hour

SINGLE SHOW (ONE PER DAY)

\$425

SHOWS (TWO PER DAY)

\$625

SHOWS (THREE PER DAY)

\$850

ADDITIONAL OPTIONS

MARLEY FLOOR (INSTALLED) \$175

LOUNGE | BOX OFFICE \$75/show

HOUSE MANAGEMENT \$30/hour

BASIC LIGHT DESIGN PACKAGE: \$250-\$400

UNDERSTANDING

YOUR OPTIONS & FEES

We understand that each show will vary in size and budget. NOD is happy to offer options to suit your company's needs.

The Standard Fees are set and consistent per show, no matter its size. Tech Directors: We do require our Tech Director be on site throughout your entire occupancy. NOD TDs are happy to assist you in your production needs including running the light board, helping with general set up and strike, trouble shooting as required, and more.

Flooring Options: Our blonde wood floor may be ideal for your purposes or you may elect to have our crew lay the black marley for the duration of your production.

The lounge | box office can be added to your rental in one of two ways. #1 Elect to have NOD take care of the concessions/bar. You run your will call. NOD keeps all concessions proceeds. #2 Rent the lounge | box office \$75/show and run things your own way - producer keeps the proceeds.

House Management is key to a successful production. NOD is fully staffed and if you choose to add HM to your contract we will ensure your show runs smoothly and your patrons are taken care of. If you prefer to staff your own HM then NOD will support you and make sure you have all the info you need.

Light design is essential to creating the perfect look feel, and vibe of a show. Our TDs are also Light Designers and you can elect to add the Basic Light Design Package. This is perfect for smaller, more low-tech shows that require one - five cues per dancer or act. If you are interested in a fully designed show we can connect you with our Light Designers and you will work out a contract between them and you, outside of your NOD contract. Those fees will vary depending upon the experience level of the designer.

TAKE A PEEK

RENT OUR STUDIOS FOR REHEARSALS

STUDIO LOCATIONS | PRICING | SIZE | FLOORING

We have three locations and five studios to choose from.

theNEST in Greenlake

6606 1st Ave NE Seattle 98115

Studio A: 1300 sq feet w/wood floors

Studio B: 1000 sq feet w/marley

Studio Sea | Greenlake

410 NE 72nd St Seattle WA 98115

Studio Sea: 1350 sq feet w/marley

eXit SPACE | NOD Theater in Capitol Hill

1621 12th Ave Seattle WA 98122

NOD Theater: 1800 sq feet w/wood or marley

Studio Oakland: 1500 sq feet w/marley

Renting space for rehearsals?

NOD Theater \$20/hour

Oakland Studio, theNEST, and Studio Sea
\$10-\$15/hour

Planning a workshop, hosting an audition or video/photoshoot?

NOD Theater \$45/hour

Oakland Studio, theNEST, and Studio Sea
\$25-\$30/hour

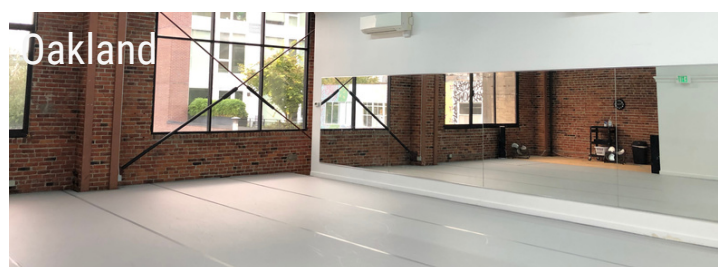
Looking for space to offer private lessons?

NOD Theater \$20/hour

Oakland Studio, theNEST, and Studio Sea
\$15-\$20/hour

Contact Christin to book space.

Rentals@exitspacedance.com



MAGIC SHEET

SHINS – Source 4 LED Luster 70 degree

4	8
3	7
2	6
1	5

BACKS – Source Forward Parnels

21	22	23	24
25	26	27	28
29	30	31	33

MIDS- Source 4 LED Luster 70 degree

12	16
11	15
10	14
9	13

BACKS ETC Color source PAR

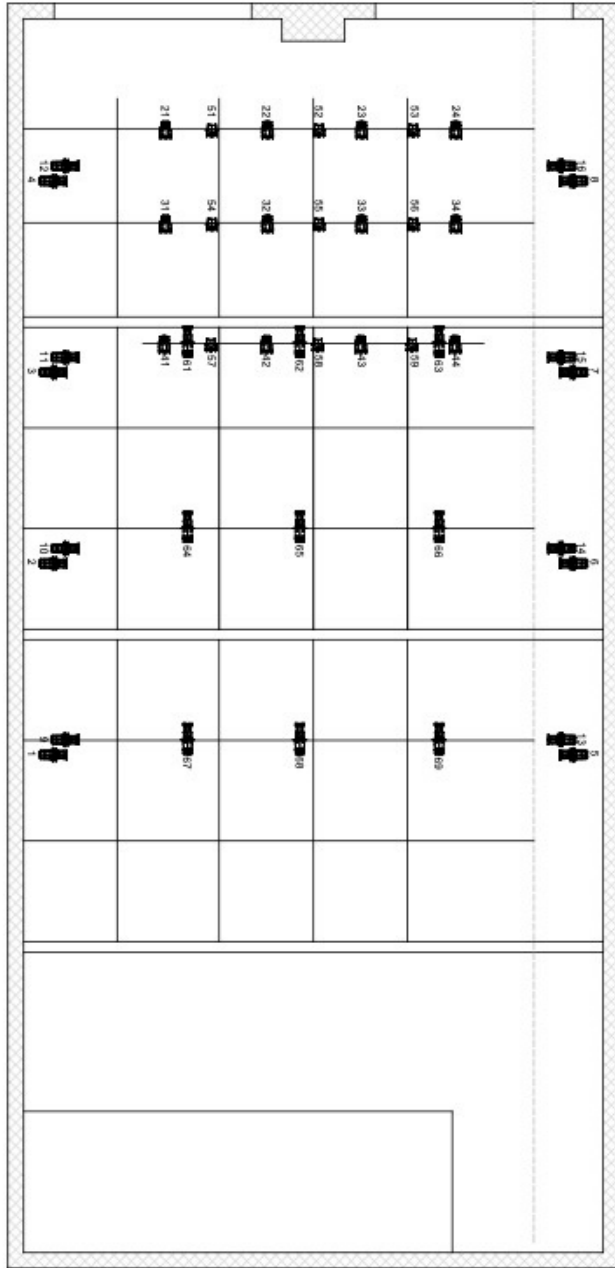
51	52	53
54	55	56
57	58	59

FRONT – Source Forward LED 50 degree

67	68	69
64	65	66
67	68	69

REP PLOT

We have plenty of power if you want to bring in and add specials or more lights. Inquire for details.



DESIGN AND DRAWING © 2021 PNTA - ALL RIGHTS RESERVED

2414 SW ANCHOR ST. SE SEATTLE WA, 98106
TEL: (206) 620-7800 S-SIGHT.PNTA.COM



THEATRICAL AND ARCHITECTURAL DESIGN/BUILD
RIGGING, DRAPES, LIGHTING, SOUND, AND MORE

EXIT SPACE DANCE

1621 12TH AVE
SEATTLE, WA 98122

PROJECT MANAGER:
CHRIS CORNELIUS
DESIGN TEAM:
SHANNON SAUNDERS
CHRIS CORNELIUS

DATE: _____ REV: _____

PRODUCTION

RIGGING

REP PLOT
V1.0 (CJC)

DATE: 10/10/2021

CJC

1/8" = 1'

PL1.0